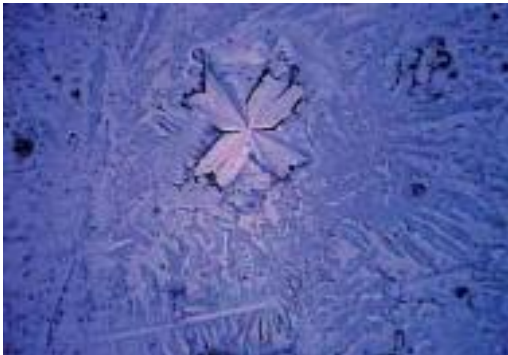


Water Study 2004

Crystal analysis by the Institute Hagalis Überlingen, Germany - Origin of Life - ranked 1st amongst 30 water companies.

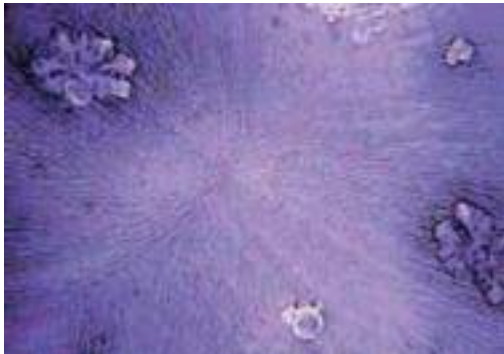
Samples from the water study



Mains water from Überlingen, 400x



Change in the structure of mains water after treatment with Origin of Life, 400x



The sample shows that fine high surface crystal structures have been formed, pointing out to the **increased bioavailability of the minerals**. At the same time the danger of calcification has declined showing **no evidence of pollutants or any other contaminants**. These flower-like crystal forms are well known in **natural spring water samples**.

The crystals that have formed are fine well branched - this is due to the revitalization of the water sample. There are no 90 ° angle structures what is proving that **harmful pollutants have been completely absorbed and neutralized**.

For more information please visit <http://www.origin-of-life.eu/>

Under sink Filter Double System

DUO „Easy Change“ -

with pre- and main-filter and leading filter quality



„Easy-Change“

means simply easy to change the filter. **Maximum filtration system which removes and blocks contaminated particles - in combination with Origin of Life energizer.**

***Origin of Life energizer: (i.e. high energized) energy rich water - with natural spring water quality - free of particles and pollutant information.**

- **Quality German workmanship** from a leading filter housing manufacturer - certified by the technical inspection authority (TÜV Germany)
- **Highest hygiene safety**- as there`s no contact with when changing filter
- A patent activated carbon filter with wide absorptions pores made from coconut peel
- The 0,1µm micro fibre membrane at the end causes the germ barrier
- **The filter removes:**
 - o **germs, bacteria, pesticides, chlorine, rust, organic contaminations,**
 - o **microorganisms, heavy metals, impaired additives, suspended particles**
- Simple installation to existing tap by toggle valve - no contamination during filter changes

* For more information refer to the **water study from 2004 -**

Origin of Life ranked 1st amongst 30 companies - <http://www.origin-of-life.eu/>

Product description and Installation

The under-counter-filter DUO consist of two filter cartridges, filter cartridges whose heads are already fixed on a mounting plate, and a separate water tap - a 3-way safety valve. The mounting plate must be installed under the sink with the prefabricated wall bracket. The two hoses must be connected to the cold water supply and drain respectively. The undercounter model requires **a separate water tap** - a small hole at the edge of the sink or countertop.



"Easy Change"

- **Simply: just a push of a button and „click“**



The changeable filter is sanitary without contaminated hazards - an essential point in optimal sanitation. The filter consists of a head and cartridge which provides for the highest standard of hygiene and reliability.

Cleaning and disinfection of the inner casing is not necessary as in other systems.

During the replacement of the filter it is not possible for bacteria to reach the internal system. Users no longer come into contact with the used or new filter particles. Assemble defects are practically barred.

The „Easy-Change“ counter top system is a special combination of high-tech water filtration system with a appealing timeless design.

Filter technology: A new Russian and German technology

Prevention of contact with used filter particles through capsuled filter housing provides maximum hygiene.

The combination of the active carbon filter and the MF-micro fibre membrane removes all contaminations and pollutants.

The raw internal filter material is coconut peel.



Internal filter

Activated carbon bloc 0,8µm Micro membrane / fiber membrane 0,1µm grade of filtration

Technical Data

Measurements: height of 350 mm, width of 180 mm, depth of 90mm;

Total weight dry: approx. 1,5 kg;

Weight internal filter cartridge: 530g each;

Maximum water pressure: 6,3bar / 91, 4psi;

Water temperature: +5°C - +40°C;

Capacity window: 3.000-10.000 liter (according to contamination);

Volume of flow: max. 4 to 5 liters / min. approx. 4,0bar (1*);

Internal filter measurement: diameter 78 mm, heigth 308 mm;

Material white: PP - Polypropylen

(1*)for optimal active carbon block protection the volume of water was limited per use.

Important tip: Use only with cold water (up to 30°C). Do not connect to domestic hot water heaters. After several days without use as well as after every filter change, first allow 10 liters of running water through the system.

In accordance with DIN 1988 a filter change after 6 months with sanitized non chlorinated water is required. Technical changes are subject to alteration.