



## Water Study 2004

Crystal Analysis conducted by the Hagalis Institute, Germany  
Origin of Life - ranked 1st amongst 30 contenders

Samples from the Hagalis Study



Mains water from Überlingen, 400x



Change in the structure of mains water after treatment with Origin of Life, 400x



The crystals that have formed are fine well branched - this is due to the revitalization of the water sample. There are no 90 ° angle structures what is proving that **harmful pollutants have been completely absorbed and neutralized.**

For more information please visit <http://www.origin-of-life.eu/>

Countertop filtration system „Easy Change“ - in stainless steel or white plastic – a timeless design with leading filter quality



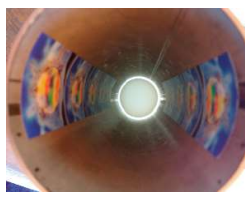
„Easy-Change“ means simply easy to change the filter. Maximum filtration system which removes and blocks contaminated particles - in combination with Origin of Life energizer\*

\*Origin of Life energizer: (i.e. high energized) energy rich water with natural spring water quality - free of particles and pollutant information.

- Quality **German workmanship** from a leading filter housing manufacturer - certified by the technical inspection authority (TÜV Germany)
- Highest hygiene safety- as there's no contact when changing filter
- A patent activated carbon filter with wide absorptions pores made from coconut peel
- The 0,1 µm micro fibre membrane at the end causes the germ barrier
- **The filter removes:**
  - o germs, bacteria, pesticides, chlorine, rust, organic contaminations,
  - o microorganisms, heavy metals, impaired additives, suspended particles
- Simple installation to existing tap by toggle valve -

\* For more information refer to the **water study from 2004** -

**Origin of Life ranked 1st amongst 30 companies** - <http://www.origin-of-life.eu/>





Origin of Life



Origin of Life

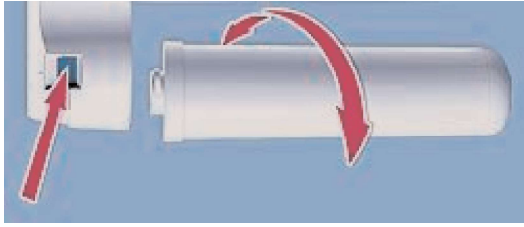
### Product description and Installation

Immediate use is possible with the preassembled fittings. Simply install and connect to the already existing water tap; the aerator in the tap should be exchanged with the toggle valve.



### “Easy Change”

- Simply: just a push of a button and „click“



The changeable filter is sanitary without contaminated hazards - an essential point in optimal sanitation. The filter consists of a head and cartridge which provides for the highest standard of hygiene and reliability.

Cleaning and disinfection of the inner casing is not necessary as in other systems.

During the replacement of the filter it is not possible for bacteria to reach the internal system. Users no longer come into contact with the used or new filter particles. Assemble defects are practically barred.

The „Easy-Change“ counter top system is a special combination of high-tech water filtration system with a appealing timeless design.

### Filter technology: A new Russian and German technology

Prevention of contact with used filter particles through capsuled filter housing provides maximum hygiene.

The combination of the active carbon filter and the MF-micro fibre membrane (0,1µm) removes all contaminations and pollutants.

The raw internal filter material is coconut peel.



Internal filter

Activated carbon bloc 0,8µm    Micro membrane / fiber membrane 0,1µm    grade of filtration

### Technical Data

Adaption: 6,35mm [1/4"] PE tube length approx. 1 meter;

Togglevalve M22 inside M24 outside;

Total weight dry: Stainless steel: 2,2 kg / Plastic: 1,5 kg (ideal take on travel)

Weight internal filter cartridge: 530g;

Maximum water pressure: 6,3bar / 91, 4psi; water temperature: +5°C - +40°C

Measurements without nozzle: approx. diameter of 80 mm, height of 370 mm, base diameter stainless steel: 120 mm / plastic: 140 mm

Filter case corpus: 2,0 mm thick satin polished stainless steel tube K240

Base: NIEROLEN® HDPE500;

Outlet: Stainless steel [1.4301]; / Outlet: white plastic - PP

Capacity window: 3.000-10.000 liter (according to contamination);

Volume of flow: max. 4 to 5 liters / min. approx. 4,0bar (1\*);

Internal filter measurement: diameter 78 mm, High 308 mm;

Material white: PP - Polypropyhlen

(1\*)for optimal active carbon block protection the volume of water was limited per use.

**Important tip:** Use only with cold water (up to 30°C). Do not connect to domestic hot water heaters. After several days without use as well as after every filter change, first allow 10 liters of running water through the system.

In accordance with DIN 1988 a filter change after 6 months with sanitized non chlorinated water is required. Technical changes are subject to alteration.